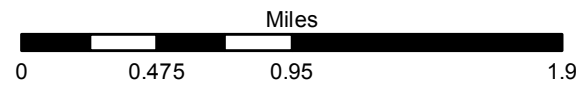
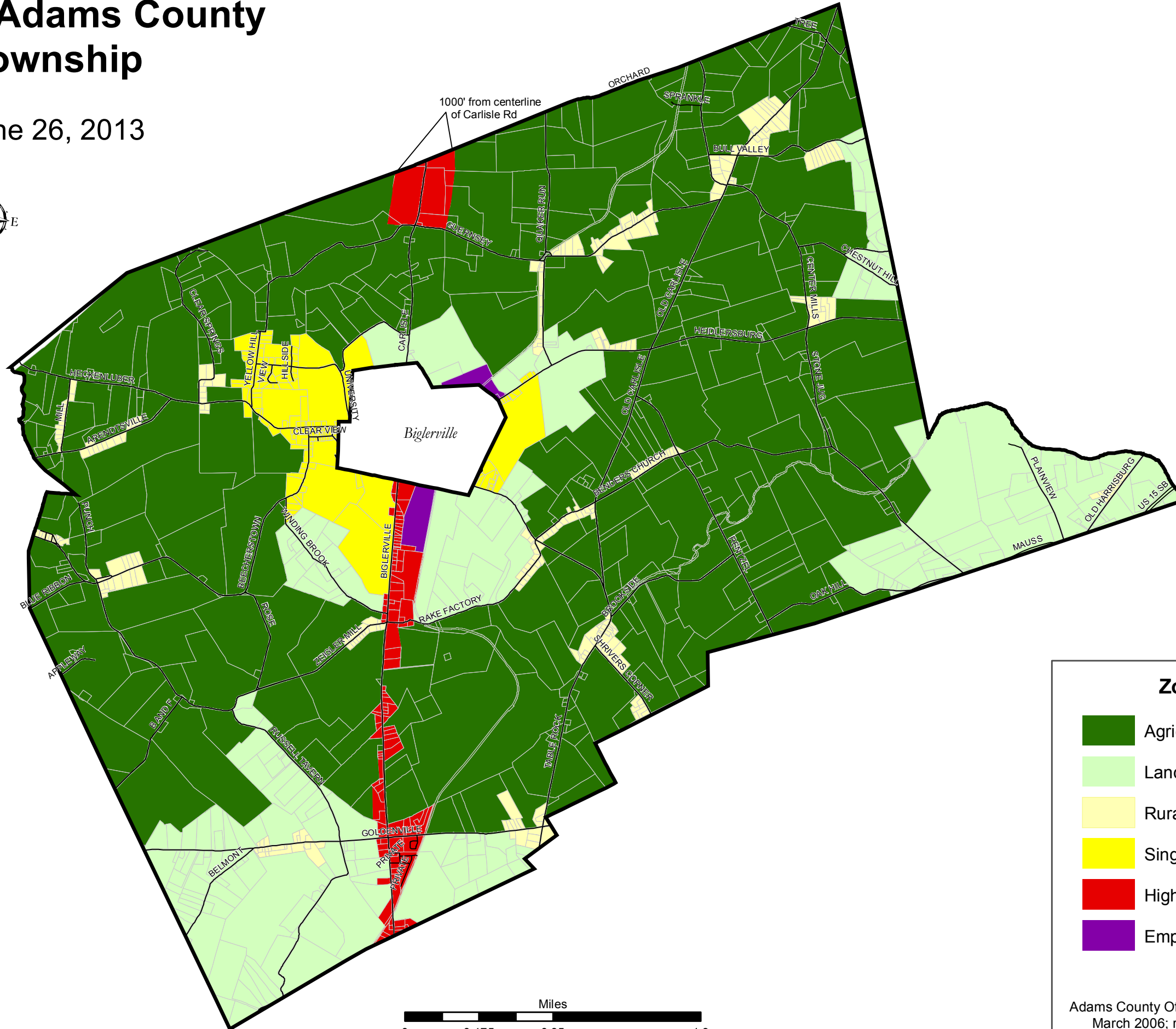
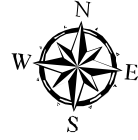


# Zoning Map of Adams County Butler Township

Adopted: June 26, 2013



**Zoning Districts**

- Agricultural Preservation (AP-1)
- Land Conservation (LC)
- Rural Residential (RR)
- Single Family Residential (SFR)
- Highway Commercial (HC)
- Employment Center (EC)

Prepared By:  
Adams County Office of Planning & Development  
March 2006; rev. August 2009, July 2013